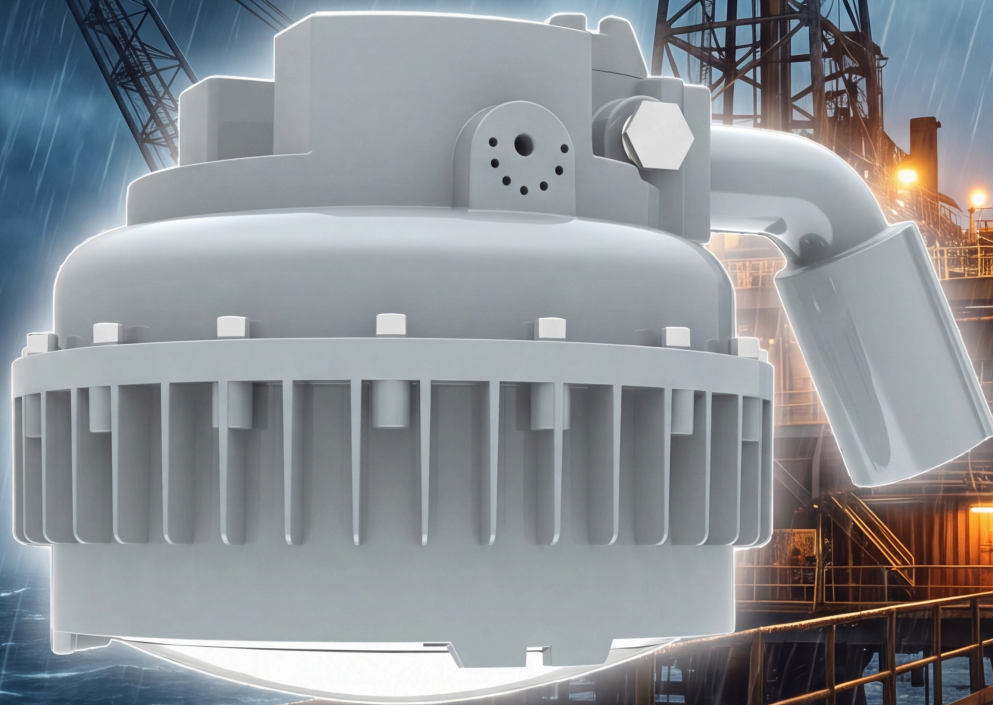




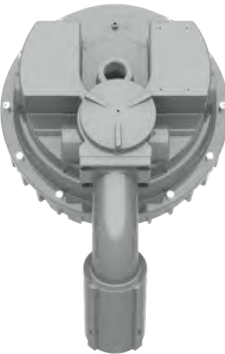
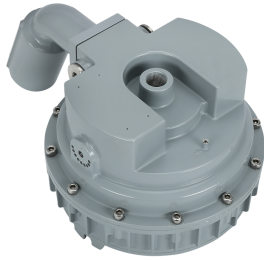
# EX-I Series

Hazardous Location LED Linear Luminaire





Flame-proof and Increased Safe Type



Cover (Optional)



Convex Glass (Optional)



## Product Description

The S Series LED luminaire is designed for installations in hazardous area where moisture, dirt, dust, corrosion and vibration may be present, or areas where wind, water, snow or high ambient can be expected. Flame-proof and increased safe functions enhance safety and reliability, which makes this product an ideal lighting solution for hazardous locations.

## Features

- Combined Flame-proof and increased safe functions, enhanced safety and reliability
- Compact and rugged structure, easy installation
- Various installation ways for different applications
- Great impact resistance with IK08/IK10 certified
- Copper-free aluminum housing, great corrosion resistance and cooling performance
- Tempered glass for high heat resistance
- Diffuser can be flat glass and convex glass optional

## Compliance

Zone 1, 2, 21, 22

### UL 844 Hazardous Locations

Class I Division 1, Group B, C, D  
 Class I Division 2, Group A, B, C, D  
 Class II Division 1, Group E, F, G  
 Class II Division 2, Group F, G  
 Class III

UL 1598 Wet Locations

UL 1598A Marine Outside Type

ABS

IP66

IK08 (glass cover)

IK10 (with wire guard)

3G vibration



## Application

- Power Plants
- Heavy Industrials Storage Facility
- Paper mills
- Wastewater Treatment Plants
- Loading Docks Platforms
- Offshore Environments
- Chemical Processing Facility
- Petrochemical Processing Facility
- Metallurgical Industry
- Coal Mine
- Food and Alcohol industry



## Warranty

5-Year Standard Warranty

LED lumen Maintenance: L70> 150,000 Operation Hours@55°C

## Technical Parameter

### • Electrical

Specification	Ex-xxxW S1NYxxDxEF	Ex-xxxW S2NYxxDxEF
Rated Power	Max. 100W	Max. 200W
Input Voltage	120-277/200-480VAC	
Input Frequency	50/60Hz	
Power Factor	> 0.95	

### • Optical

Specification	Ex-xxxW S1NYxxDxEF	Ex-xxxW S2NYxxDxEF
Lumen Output	Max. 13000lm	Max. 26000lm
Lumens Per Watt	130lm/W	
CCT	3000K/4000K/5000K/6500K	
CRI	> 70	
Beam Angle	40°/60°/90°/120°	

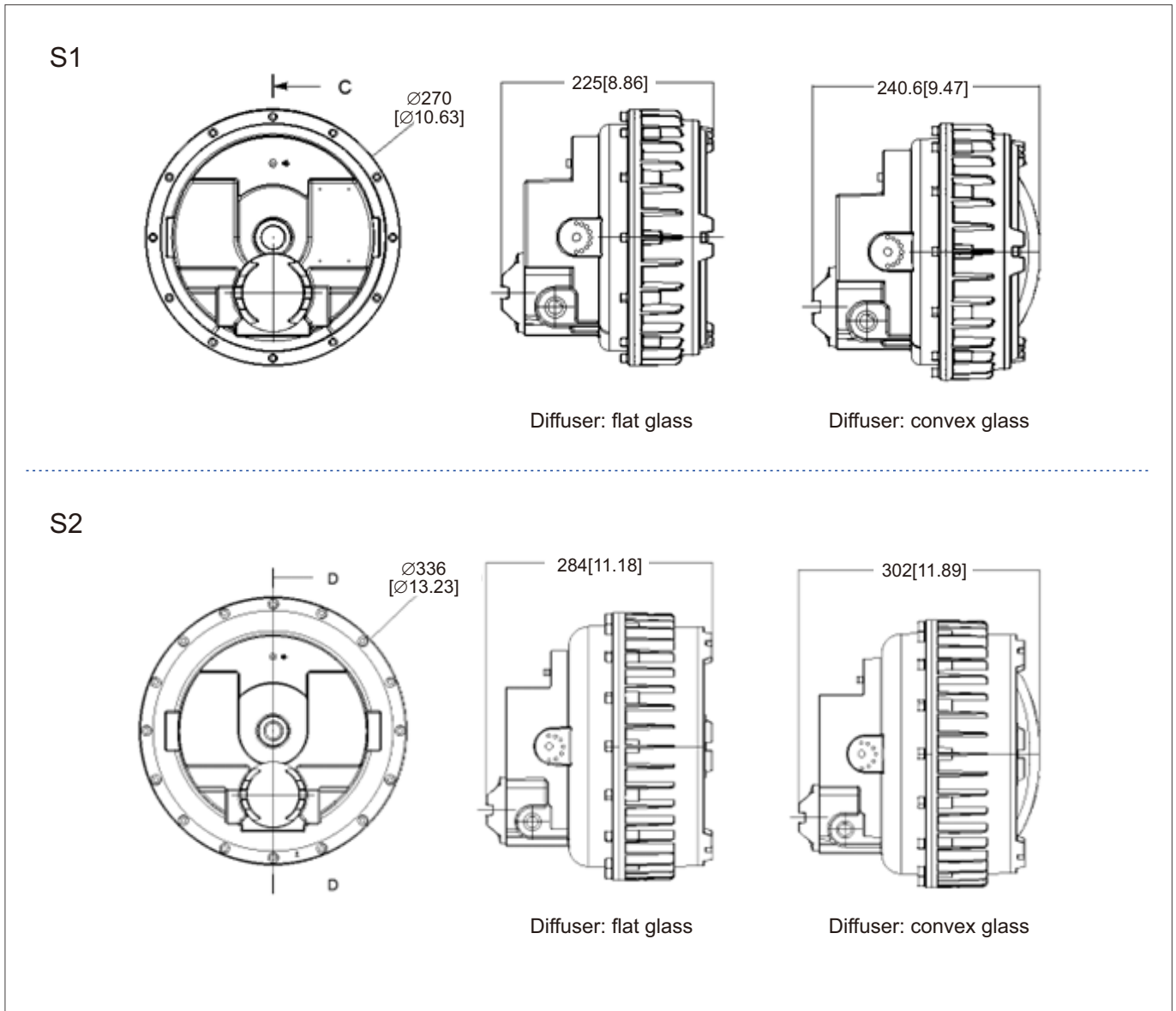
### • Environmental

Specification	Ex-xxxW S1NYxxDxEF	Ex-xxxW S2NYxxDxEF
Ambient Operating Temperature	-40°C to +65°C (-40°F to +149°F)	

### • Mechanical

Specification	Ex-xxxW S1NYxxDxEF	Ex-xxxW S2NYxxDxEF
Housing Material	Aluminum alloy ADC12	
Diffuser	Tempered glass; Flat (standard)/Convex (Optional)	
Protection	IP66/IK08 (glass cover)/IK10 (with wire guard)	
Mounting	Pole (25°/90°), Jib, U-bracket	
Relocation of NPT Adapter	<ol style="list-style-type: none"> <li>1. The lead hole of the product is processed NPT thread, and the lead hole is closed with NPT plug.</li> <li>2. If the conduit opening of NPT adapter is not used, closed it with plug by 368 Nm torque. The conduit must be rigid.</li> </ol>	

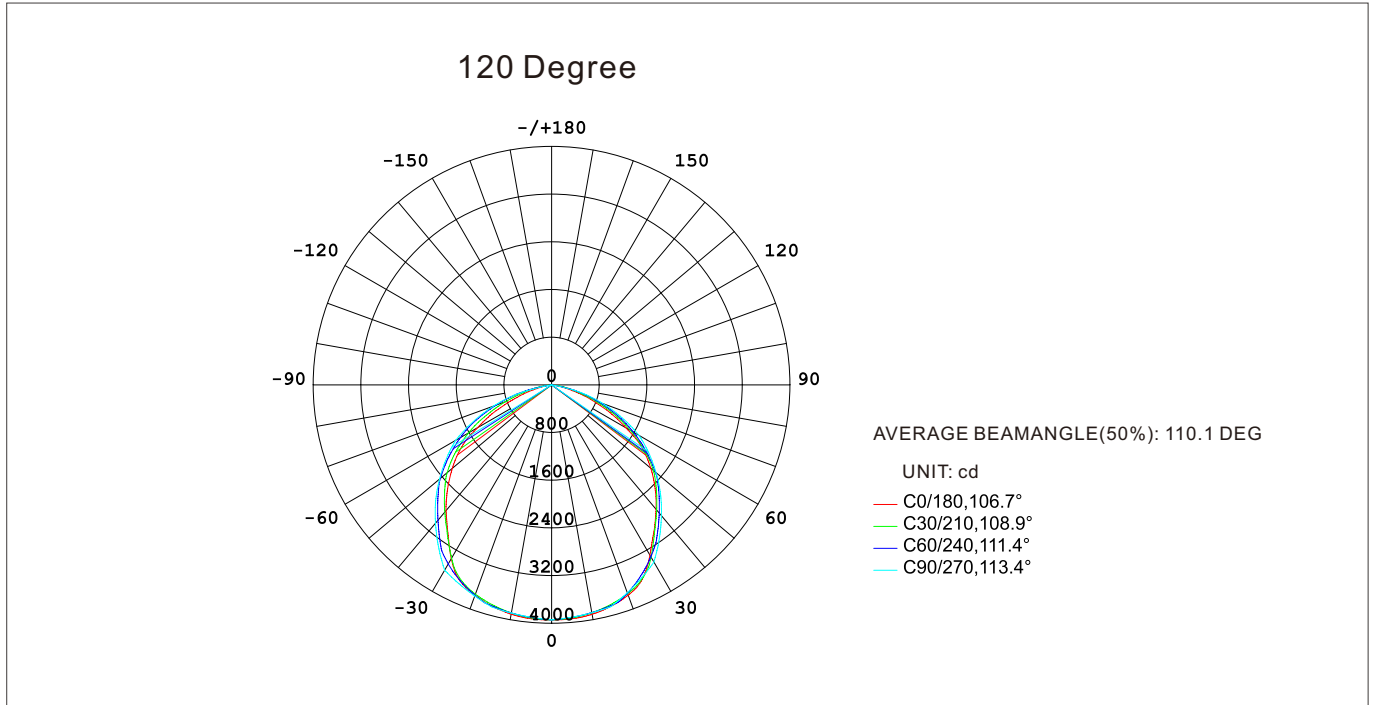
**Product Dimensions** Unit: mm[inch]



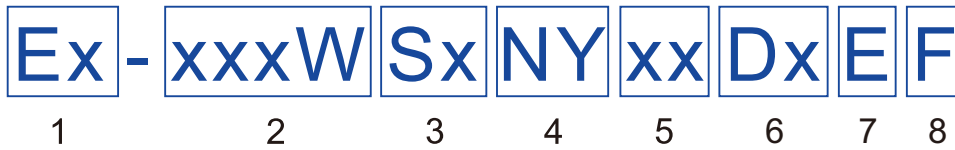
● **Packing Information**

Model	Net Weight	Gross Weight	Quantity/Carton	Package Dimensions (LxWxH)
S1	9.5 kg/ 20.9 lb	11.65 kg/ 25.7 lb	1 pc	420x470x320mm/16.54x18.50x12.60inch
S2	18.02 kg/ 39.7 lb	20.55 kg/ 45.3 lb	1 pc	500x470x400mm/19.69x18.5x15.75inch

## Photometric



## Ordering Guide



1. Basic Model Series	2. Input Wattage	3. Luminaire Housing Length	4. Additional Nonsignificant Suffix
Ex: Explosion Proof Product	Can be: 10W/20W/30W/ 40W/50W/60W/ 70W...200W	Can be: S1: Ø270*225/241mm S2: Ø336*284/302mm	NY

5. Color Temperature	6. Beam Angle	7. Diffuser	8. Way to Install
Can be: 30: 3000K 40: 4000K 50: 5000K 65: 6500K	Can be: D40: 40° D60: 60° D90: 90° D120: 120°	Can be: F: Flat glass C: Convex glass	Can be: Pxx: Pole Mounting (90°/25°) J: Jib Mounting U: U-bracket Mounting

## Mounting Methods and Accessories

- Option 1: Stanchion 90° Mounting



- Option 2: Stanchion 25° Mounting



- Option 3: Bracket Mounting

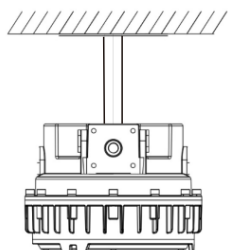


- Accessory



**Bracket**

- Option 4: Pendant Mounting



- Accessory



**Pole**  
Ex-Straight Pipe

## Circuit Connection

### • Steps of Circuit Connection:

1. Ensure all the power is turned off.
2. Open the junction box.
3. Install 3/4" trade size conduit to 3/4" NPT adapter on the luminaire.
4. Connect the L, N, G from branch to the slots of terminal block, according to the marking on terminal block.
5. Close the power connecting cavity.

