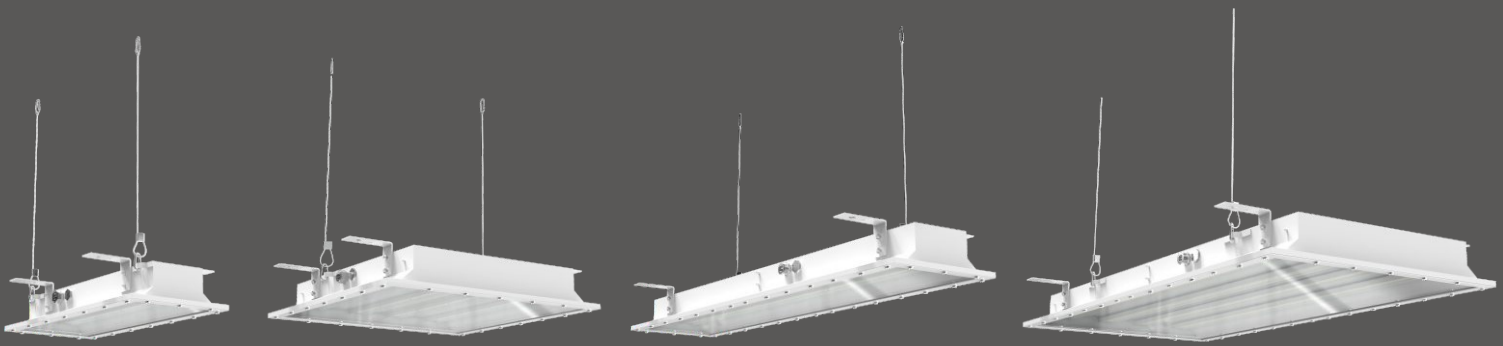


# FLD Series

Explosion Proof Light — Pendant/Ceiling Mount





FLD12

FLD22

FLD14

FLD24



## Product Description

Pan american FLD series LED linear luminaires are designed to provide ideal illumination in the harshest environments, also suitable for marine applications. Available in four common sizes, it is certified for use in Class I, Division 2 and Zone 2 locations and others made hazardous by the presence of flammable vapors or gases or combustible dusts.

## Features

- Suitable for use in Class I, Division 2 and Zone 2/22 environments
- Available in four common sizes
- Emergency function is optional with emergency time 3 hours
- Outstanding water and dust proof performance (IP66)
- High luminous efficacy - up to 130 lumens per watt
- Flexible, quick, and easy installation - pendant and ceiling mount available
- Safety rope included for additional protection

## Compliance

### UL 844 Hazardous Locations

Class I Division 2, Groups A, B, C, D  
 Class I, Zone 2, Group IIA, IIB, IIC  
 UL 1598 Wet Locations  
 UL 924 Emergency Lighting  
 ETL

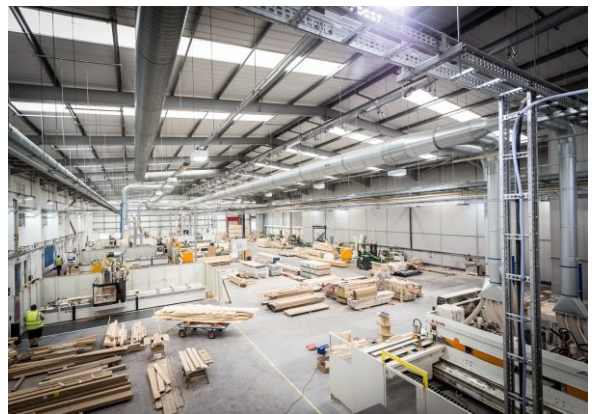
### IECEX Certificate number: IECEX CSAE 21.0013X

Ex db ec IIC T6/T5/T4 Gc  
 Ex tc IIIC T80°C/T95°C/T100°C Dc

### ATEX Certificate number: CSANe 23ATEX1213X

II 3GD  
 Ex db ec IIC T6/T5/T4 Gc  
 Ex tc IIIC T80°C/T95°C/T100°C Dc

IP66  
 IK10



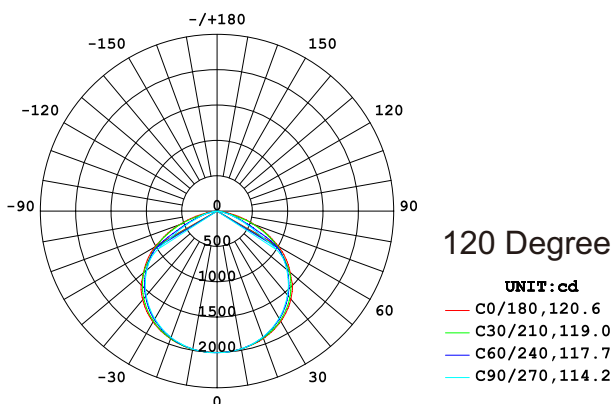
## Application

- Locations requiring continuous and consistent light levels in extreme ambient temperatures
- Where flammable vapors, gases, ignitable dusts, or fibers are present
- Where corrosive, wet, dusty, hot and/or cold conditions exist
- Marine, wet locations and hose-down environments
- Manufacturing plants, chemical or pharmaceutical facilities, loading platforms, food and alcohol factories, paper mills

## Warranty

5-Year Standard Warranty  
 LED lumen Maintenance: L70> 150,000 Operation Hours@55°C

## Photometric



## Technical Parameter

### • Electrical

Model NO for UL	<b>EX-xxxW FLD12*YZDA</b>	<b>EX-xxxW FLD14*YZDA</b>	<b>EX-xxxW FLD22*YZDA</b>	<b>EX-xxxW FLD24*YZDA</b>
Model NO for Zone 2	<b>EX-***W RFLD1-2YZD-cc-2</b>	<b>EX-***W RFLD1-4YZD-cc-2</b>	<b>EX-***W RFLD2-2YZD-cc-2</b>	<b>EX-***W RFLD2-4YZD-cc-2</b>
Rated Power in Normal Mode	15/20/25/30/35/40/50W	15/20/25/30/35/40/50/60/70/80/90/100W	15/20/25/30/35/40/50/60/70/80/90/100W	15/20/25/30/35/40/50/60/70/80/90/100/120/150/180/200W
Input Voltage	AC120-277V/AC200-480V (Class I, Division 2); AC100-277V (Zone 2/22)			
Input Frequency	50-60Hz			
Emergency Function	Available			
Rated Power in Emergency Mode	9W			
Emergency Time	3 hours			
Power Supply	Built-in power supply			
Power Protection	Over-voltage, over-current and short-circuit protection			

### • Optical

Model NO for UL	<b>EX-xxxW FLD12*YZDA</b>	<b>EX-xxxW FLD14*YZDA</b>	<b>EX-xxxW FLD22*YZDA</b>	<b>EX-xxxW FLD24*YZDA</b>
Model NO for Zone 2	<b>EX-***W RFLD1-2YZD-cc-2</b>	<b>EX-***W RFLD1-4YZD-cc-2</b>	<b>EX-***W RFLD2-2YZD-cc-2</b>	<b>EX-***W RFLD2-4YZD-cc-2</b>
Lumen Output	2,600-6,500lm	2,600-13,000lm	2,600-13,000lm	13,000-26,000lm
Lumens Per Watt	130lm/W			
Beam Angle	120°			
CCT	2700K/3000K/4000K/5000K/5700K/6500K			
Dimming	0-10V dimming			
Intelligent Control	Microwave sensing switch			

### • Mechanical

Model NO for UL	<b>EX-xxxW FLD12*YZDA</b>	<b>EX-xxxW FLD14*YZDA</b>	<b>EX-xxxW FLD22*YZDA</b>	<b>EX-xxxW FLD24*YZDA</b>
Model NO for Zone 2	<b>EX-***W RFLD1-2YZD-cc-2</b>	<b>EX-***W RFLD1-4YZD-cc-2</b>	<b>EX-***W RFLD2-2YZD-cc-2</b>	<b>EX-***W RFLD2-4YZD-cc-2</b>
Housing Material	Al6063 (standard); SUS304/SUS316/SPCC (optional)			
Diffuser	PC/Glass (Notice: Glass diffuser comes with wire guard part for safety)			
Waterproof Sealing Ring	Polytetrafluoroethylene			
Hardware	Stainless steel			
Finish	Powder coating			
Fixture Color	White			
Protection	IP66/IK10			
Mounting	Ceiling, Pendant			

• Ambient Temperature

Type	T Code	Ambient Temperature
for Class I, Division 2	T4/T100°C	-40°C to +60°C
Normal for Zone 2	T6/T80°C	-40°C to +45°C
	T5/T95°C	-40°C to +55°C
	T4/T100°C	-40°C to +60°C
Emergency for Zone 2	T6/T80°C	-10°C to +45°C
	T5/T95°C	-10°C to +55°C
	T4/T100°C	-10°C to +60°C

Ordering Guide (for Class I, Division 2)



1. Model Series Name	2. Wattage	3. Basic Model Series Name			
"EX" = Explosion Proof Light	FLD12: 15/20/25/30/35/40/50W FLD14: 15/20/25/30/35/40/50/60/70/80/90/100W FLD22: 15/20/25/30/35/40/50/60/70/80/90/100W FLD24: 15/20/25/30/35/40/50/60/70/80/90/100/120/150/180/200W	FLD			
4. Overall Dimension of Housing	5. Dimming	6. Color Temperature	7. Beam Angle	8. Commercial Use	
"12" = 1 ft x 2 ft "22" = 2 ft x 2 ft "14" = 1 ft x 4 ft "24" = 2 ft x 4 ft	"D" = Dimmable Blank = Non-dimmable	"27" = 2700K, "30" = 3000K "40" = 4000K, "50" = 5000K "57" = 5700K, "65" = 6500K	"D120"= 120 degrees	Can be: 1/2/3/4/5/6	

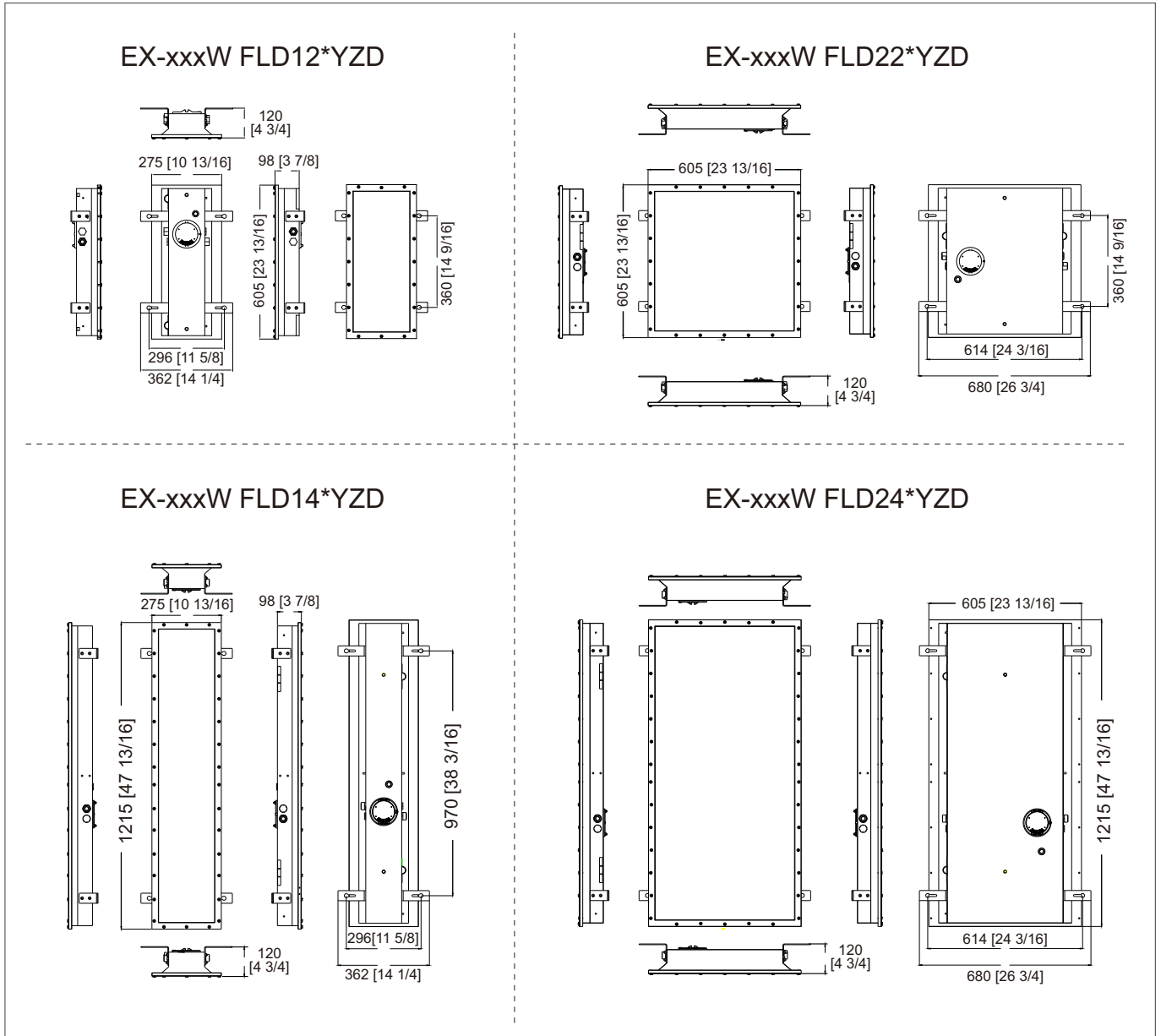
Ordering Guide (for Zone2)



1. Product Category	2. Rated Power of the Driver Output	3. Design Number	4. Quantity and Length of the LED Board	
"EX" = Explosion-proof Light	FLD1-2: 15/20/25/30/35/40/50W FLD1-4: 15/20/25/30/35/40/50/60/70/80/90W FLD2-2: 15/20/25/30/35/40/50/60/70/80/90W FLD2-4: 15/20/25/30/35/40/50/60/70/80/90/100/120/150/180W	R	"#" can be: FLD1-2, FLD1-4, FLD2-2, FLD2-4. (For example, 1 denotes the quantity is 2; 2 denotes the length is 600mm)	
5. Sensor	6. Color Temperature	7. Beam Angle	8. Emergency Function	9. Application Area
Y=Dimmable N=Non-dimmable	"27" = 2700K, "30" = 3000K "40" = 4000K, "50" = 5000K "57" = 5700K, "65" = 6500K	"D" = D120	"EM" = Emergency Blank = Non- emergency	Blank = Zone 1 -2=Zone 2

# Product Dimensions (for Ceiling/Pendant Mount)

Unit: mm [inch]

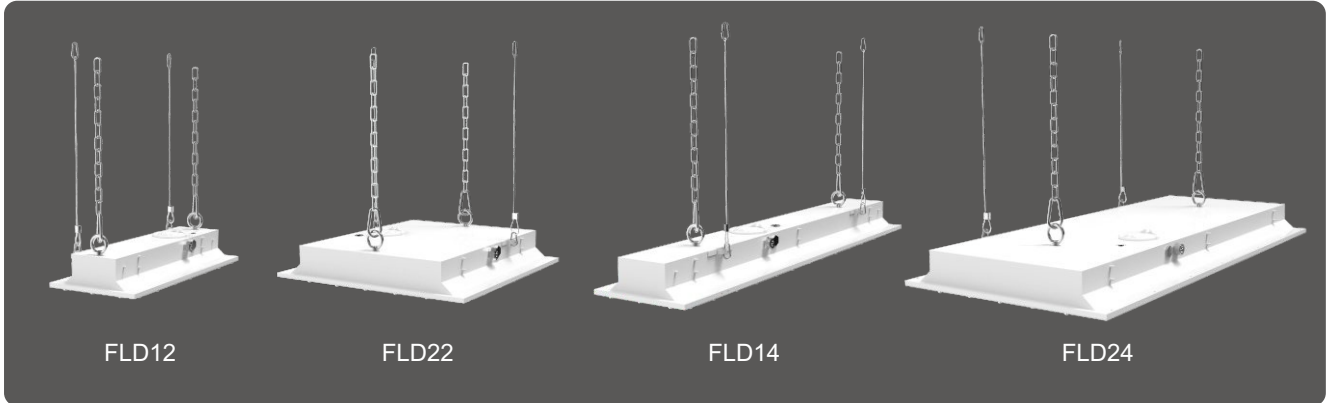


## • Packing Information

Model	Product Dimensions (LxWxH)	Quantity/Carton	Gross Weight	Package Dimensions (LxWxH)
FLD12	605x275x120mm/ 23.8x10.8x4.7inch	1 pc	9kg/19.8lb	700x350x175mm/27.6x13.8x6.9inch
FLD14	275x1215x120mm/1.8x47.8x4.7inch	1 pc	20kg/44lb	1320x350x175mm/52x13.8x6.9inch
FLD22	605x605x120mm/23.8x23.8x4.7inch	1 pc	21kg/46.3lb	700x680x175mm/27.6x26.8x6.9inch
FLD24	605x1215x120mm/23.8x47.8x4.7inch	1 pc	30kg/66.1lb	1320x680x175mm/52x26.8x6.9inch

## Mounting Methods and Accessories

### • Option 1: Pendant Mount



### • Accessories (Included in the packaging)



Lifting Ring



Hanging Chain



Safety Rope

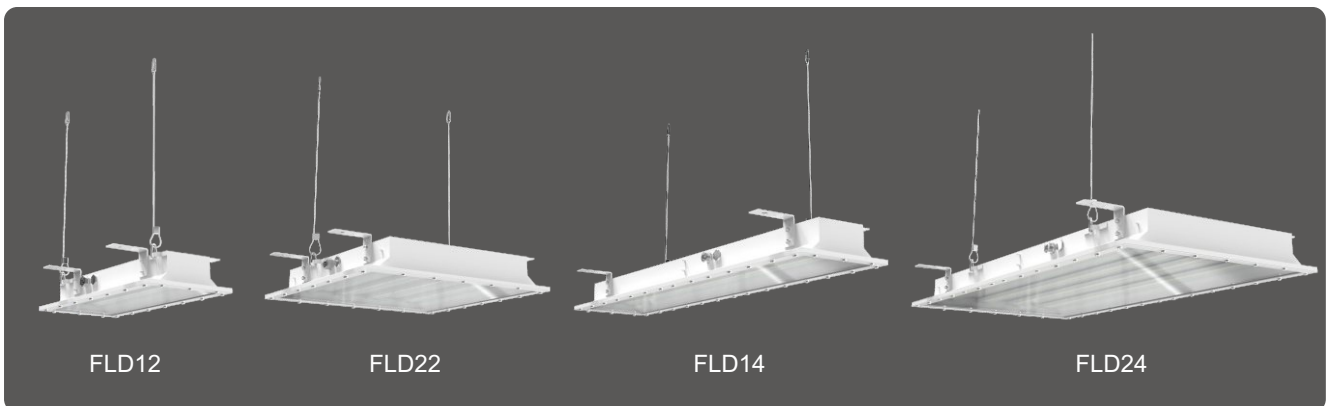


Built-in low voltage  
Microwave Sensor  
(Only for PC cover)



120-277VAC Motion  
Sensor and Photocell

### • Option 2: Ceiling Mount



### • Accessories (Included in the packaging)



Ceiling Mount Bracket



Safety Rope



Built-in low voltage  
Microwave Sensor  
(Only for PC cover)



120-277VAC Motion  
Sensor and Photocell