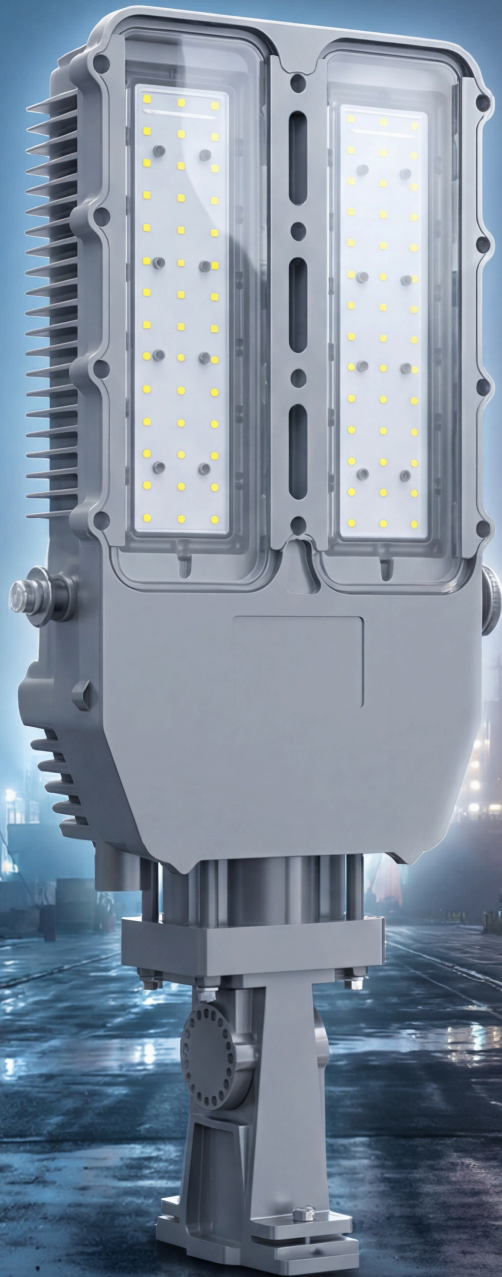
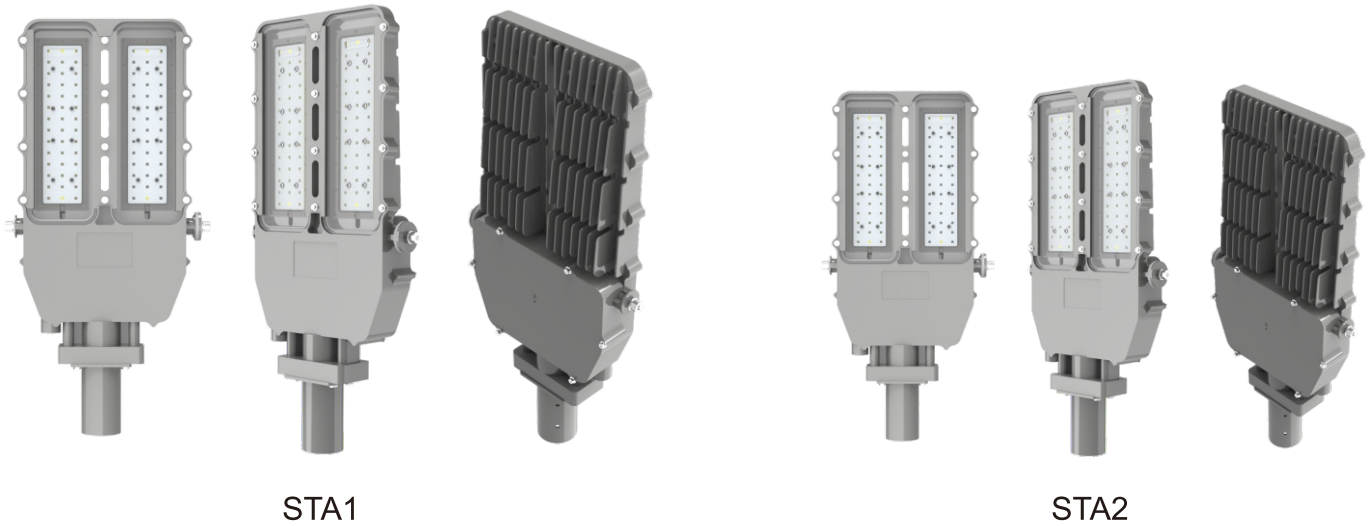


STA1/STA2 Series

Hazardous Location LED Luminaire





STA1

STA2



Product Description

The STA1/STA2 Series LED fixture is the ideal choice for marine and hazardous applications. They can be used in locations where moisture, dirt, dust, corrosion and vibration may be present, or areas where wind, water, snow or high ambient can be expected.

Features

- Suitable for Zone 1&2 (Gas), Zone 21&22 (Dust)
- High luminous efficacy - Up to 120-140 lumens per watt
- 0-10V dimming
- Waterproof and dust-proof, without internal cleaning and maintenance
- Simple structure for easy and quick installation
- Stainless steel fasteners, ADC12 aluminum housing, good corrosion resistance
- Tempered glass, high light transmittance and impact resistance

Compliance

ATEX Standard (Zone 1):

II 2 G Ex eb mb IIC T6...T4 Gb

II 2 D Ex tb IIIC T95°C...T125°C Db IP66

ATEX Standard (Zone 2&21&22):

II 3G Ex ec mb IIC T6...T4 Gc

II 2D Ex tb IIIC T80°C...T100°C Db

IECEx Standard (Zone 1):

Ex eb mb IIC T6...T4 Gb

Ex tb IIIC T95°C...T125°C Db IP66

IECEx Standard (Zone 2&21&22):

Ex ec mb IIC T6...T4 Gc

Ex tb IIIC T80°C...T100°C Db

Class I Zone 2 Group IIC

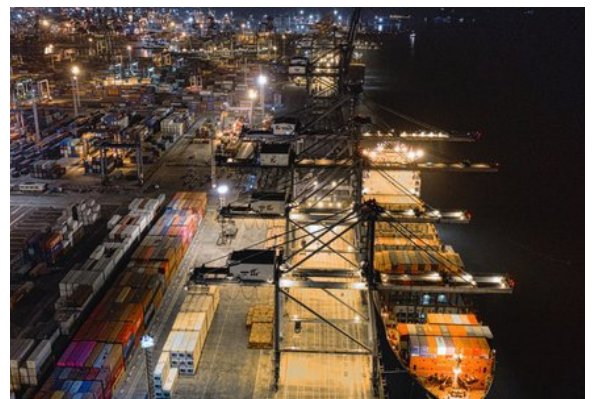
Class II Zone 21 Group IIIC

IP66

IK07/08 (without wire guard)

IK09 (with wire guard)

1000 hours salt spray



Application

- Power Plants
- Heavy Industrials Storage Facility
- Paper mills
- Wastewater Treatment Plants
- Loading Docks Platforms
- Offshore Environments
- Chemical Processing Facility
- Petrochemical Processing Facility
- Metallurgical Industry
- Coal Mine
- Food and Alcohol industry



Warranty

5-Year Standard Warranty

Technical Parameter

• Electrical

Model	STA1	STA2
Rated Power	Max. 120W/Max. 200W/Max. 240W	Max. 120W
Input Voltage	AC200-277V	AC200-277V
Input Frequency	50/60Hz	50/60Hz
Emergency	Emergency only for STA1 with Max. 120W	No emergency

• Optical

Model	STA1	STA2
Lumen Output	14,400-16,800Lm/24,000-28,000Lm/28,800-33,600Lm	14,400-16,800Lm
Lumens Per Watt	120-140lm/W	120-140lm/W
CCT	2700K-7000K	2700K-7000K
CRI	> 70	> 70
Beam Angle	40°/60°/90°/120°/T3/T5	40°/60°/90°/120°/T3/T5
Dimming	0-10V dimming	0-10V dimming

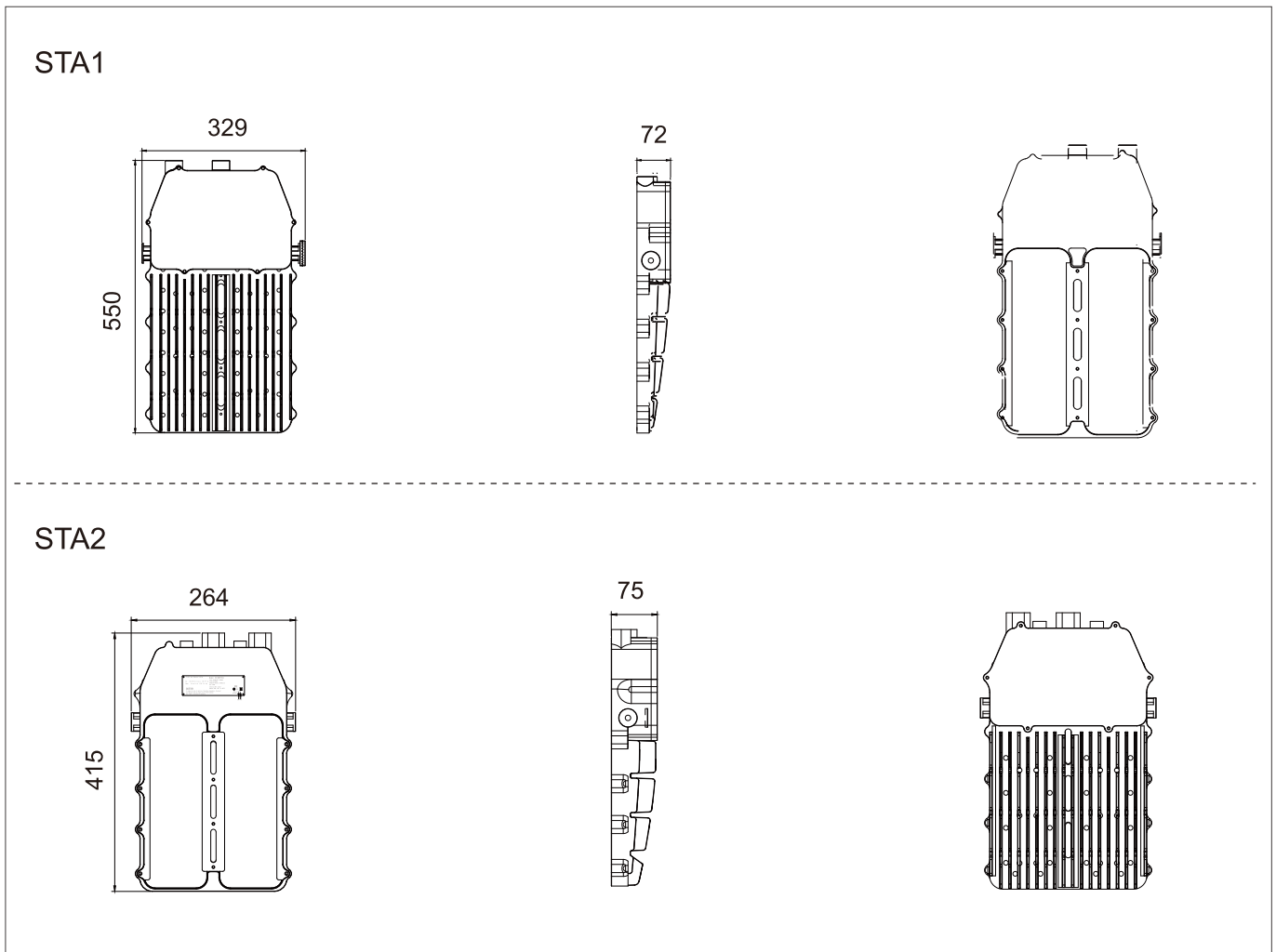
• Mechanical

Model	STA1	STA2
Housing Material	ADC12 aluminum	ADC12 aluminum
Glass	Tempered glass	Tempered glass
Surface	Explosion-proof joint surface	Explosion-proof joint surface
Fasteners	Stainless steel	Stainless steel
Protection	IP66/IP67 IK07/08 (without wire guard)/IK09 (with wire guard)	IP66/IP67 IK07/08 (without wire guard)/IK09 (with wire guard)
Mounting	Pole, Trunnion, Arm, Slip Fitter, Bracket, Stanchion	Pole, Trunnion, Arm, Slip Fitter, Bracket, Stanchion

• Environmental

Model	Rated Power	Ambient Temperature	Temperature Class (Gas/Dust)
STA1 (Normal)	Max. 240W	-40°C to +40°C	T4/80°C
	Max. 200W	-40°C to +50°C	T4/90°C
	Max. 120W	-40°C to +40°C	T5/80°C
	Max. 120W	-40°C to +56°C	T5/90°C
	Max. 120W	-40°C to +66°C	T4/90°C
STA1 (Emergency)	Max. 120W	0°C to +40°C	T4/80°C
	Max. 100W	-40°C to +40°C	T5/80°C
	Max. 100W	-40°C to +50°C	T5/80°C
	Max. 100W	-40°C to +56°C	T4/90°C
	Max. 50W	-40°C to +40°C	T6/80°C
	Max. 50W	-40°C to +66°C	T5/90°C

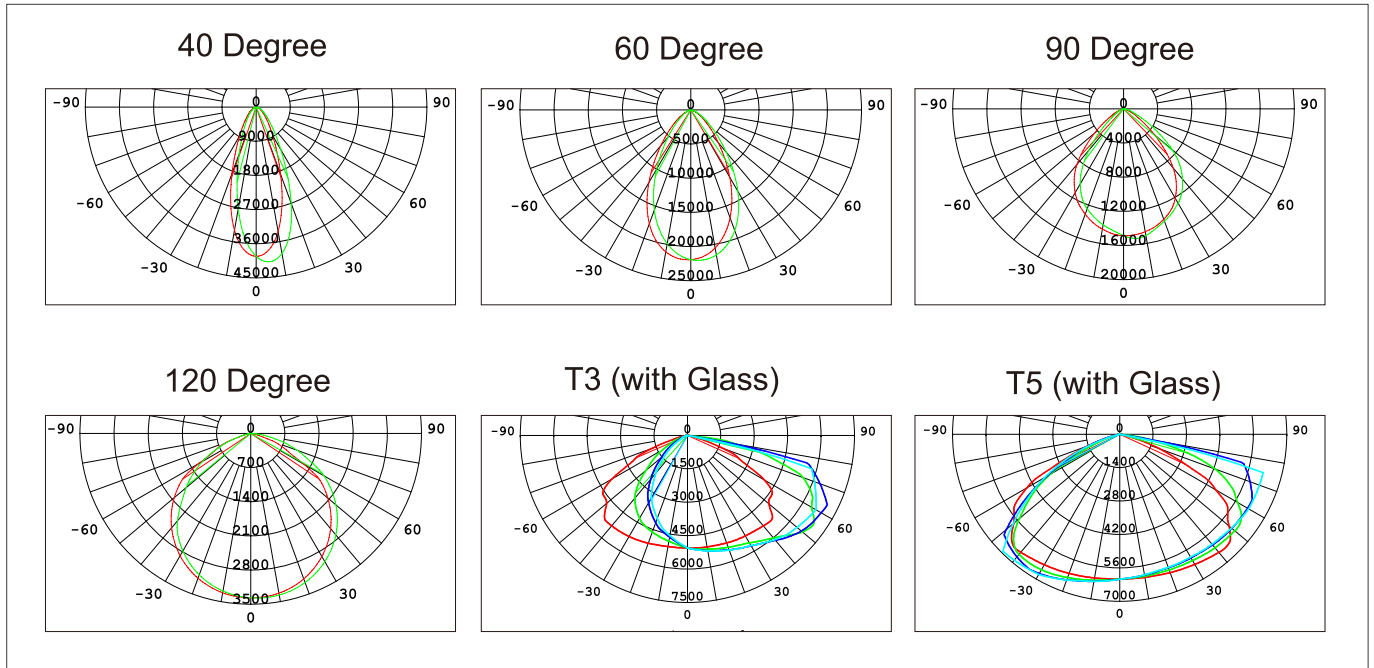
Product Dimensions (Unit: mm)



• Packing Information

Model	Net Weight (Product)	Product Dimensions (LxWxH)	Quantity/Carton	Gross Weight	Package Dimensions (LxWxH)
STA1	9.5kg/20.94lb	550x329x72mm/ 21.65x12.95x2.83inch	1 pc	13.2kg/29.10lb	890x400x220mm/ 35.04x15.75x8.66inch
STA2	6.5kg/14.33lb	415x264x75mm/ 16.34x10.39x2.95inch	1 pc	10.3kg/22.71lb	670x340x210mm/ 26.38x13.39x8.27inch

Photometric



Ordering Guide (for Zone 2)

EX -
 ***W

*
**
D***
*
-2

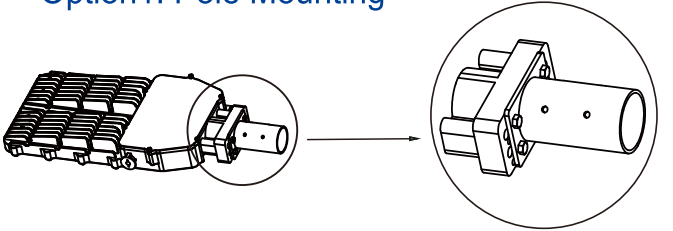
1
2
3
4
5
6
7
8

1. Product Type	2. Luminaires Wattage	3. Product Code	4. Dimming Option
EX: explosion proof light	for STA1: Max. 120W/Max. 200W/ Max. 240W for STA2: Max. 120W	STA1 STA2	D=Dimmable N=Non-dimmable
5. Color Temperature (CCT)	6. Beam Angle	7. Emergency Power	8. Zone
27=2700K, 30=3000K, 40=4000K 45=4500K, 50=5000K, 55=5500K 60=6000K, 65=6500K	D120=120°	-EM: with emergency power # Blank: without emergency power	-2: Zone 2

Remark: # Only for product code STA1 with Max. 120W

Mounting Methods and Accessories

• Option 1: Pole Mounting



Adapter bracket &
Light pole mounting bracket

• Accessories

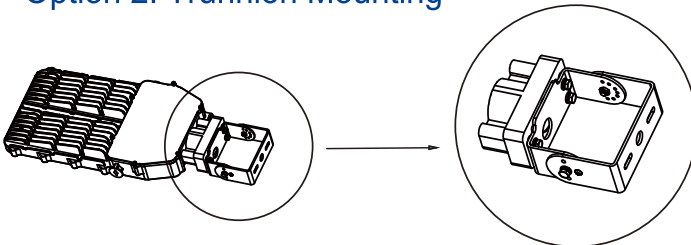


Adapter bracket



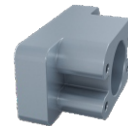
Light pole
mounting bracket

• Option 2: Trunnion Mounting



Adapter bracket &
Trunnion mounition kit

• Accessories

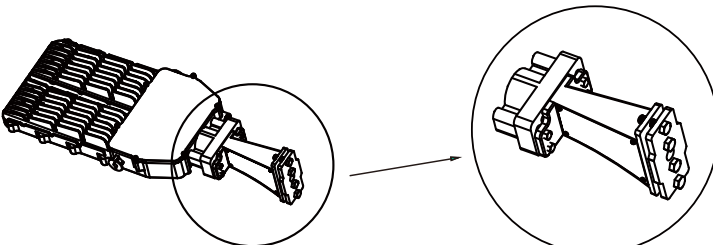


Adapter bracket



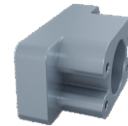
Trunnion mounting kit

• Option 3: Arm Mounting (A)



Adapter bracket &
Arm mounting kit A

• Accessories

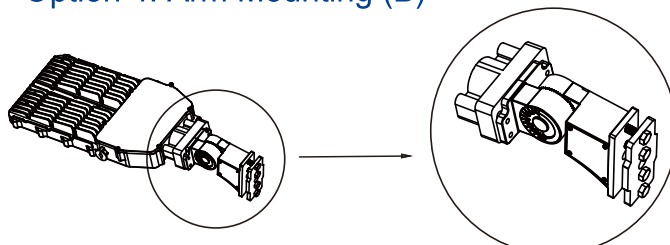


Adapter bracket



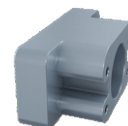
Arm mounting kit A

• Option 4: Arm Mounting (B)

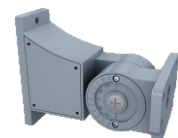


Adapter bracket &
Adjustable arm mounition kit B

• Accessories



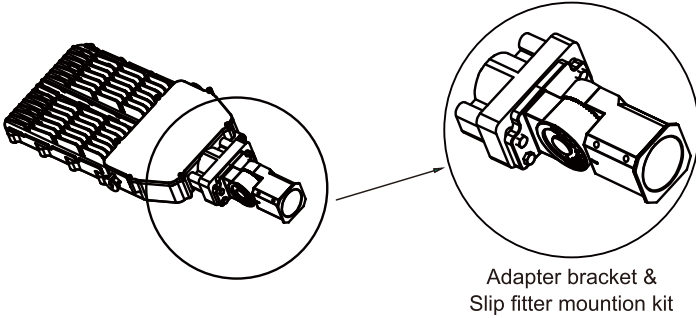
Adapter bracket



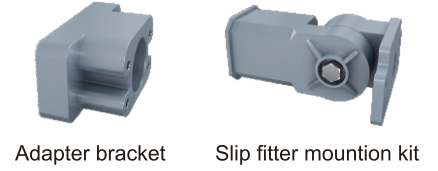
Adjustable arm
mounting kit B

Mounting Methods and Accessories

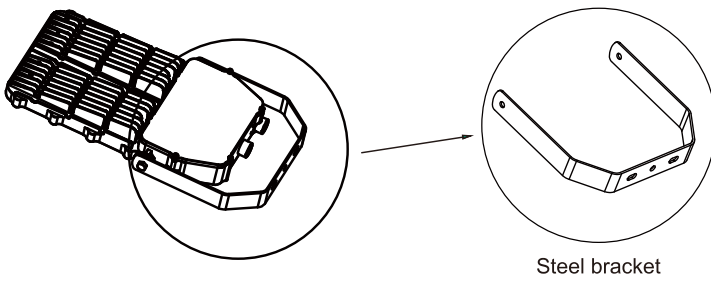
• Option 5: Slip Fitter Mounting



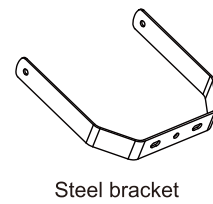
• Accessories



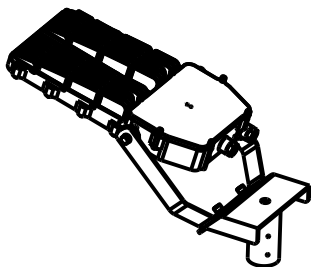
• Option 6: Bracket Mounting



• Accessory



• Option 7: Trunnion Mounting



• Accessory

